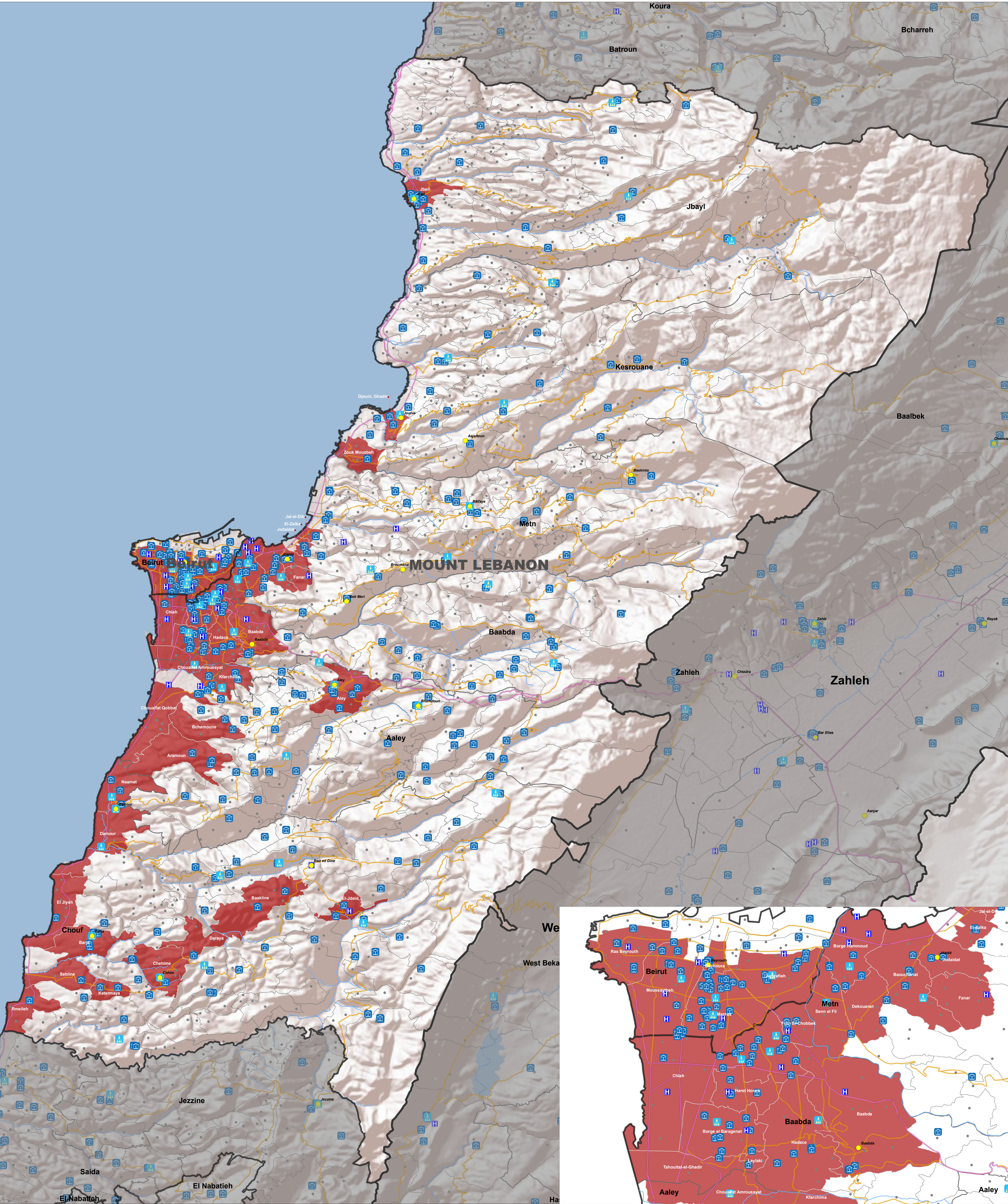


# LEBANON BEIRUT AND MOUNT LEBANON GOVERNORATES



## Highly Vulnerable Population by Cadastral

Social Development Centers, Public Schools and Health Infrastructure



### LEGEND

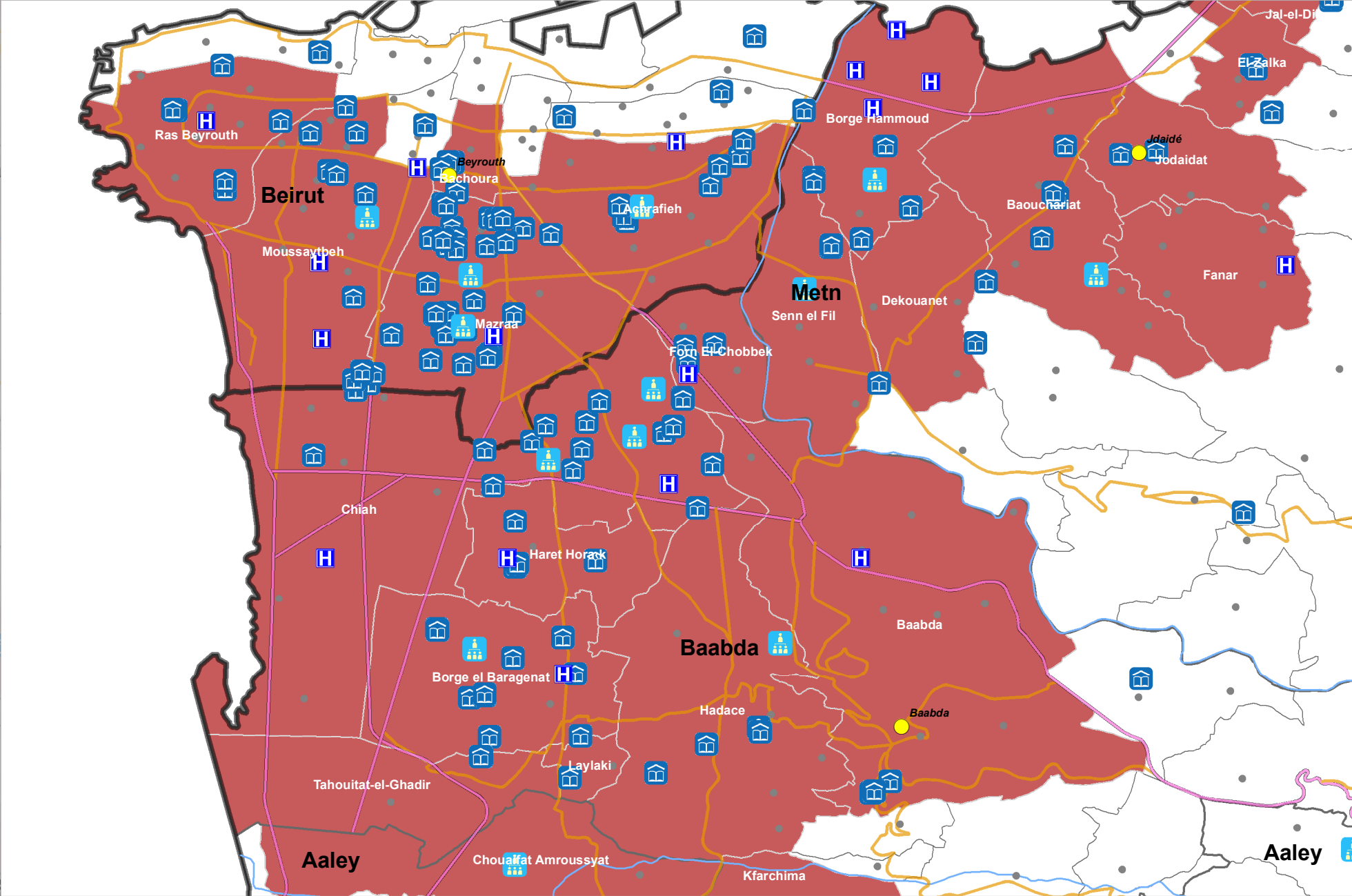
- Governorate
- Caza/District
- Cadastral
- Highly Vulnerable Population
- Social Development Centers
- Health Infrastructure
- Public Schools
- International Road
- Primary Road
- Rivers
- Major Towns
- Villages



Republic of Lebanon  
Presidency of the Council of Ministers

0 3 6 12 Kilometers

GIS and Mapping by: UNHCR  
Map Produced: 25 July, 2013



Lebanon being one of the countries affected by the Syrian Crisis is embarking on its 5th round of regional response planning. Although the refugee population has multitude of vulnerabilities that need immediate response for basic lifesaving interventions, the effects of the crisis is also spreading much deeper into the fragile social fabric of the Lebanese population. Pre-crisis Lebanon had almost 30 percent of its population living on less than 4 USD per person per day, counting for almost 1.2 million people if projected on today's population (ca. 4.2 Million). The refugee population is mostly concentrated in the northern and eastern peripheries of the country, though latest UNHCR registration figures also show that the population is widely scattered over the entire country and in almost every municipality/village. For the purposes of having a much more focused approach in targeting the 5th response plan, a priority list of localities would be needed capturing the different vulnerabilities: the Lebanese population and the Syrian refugees. To operationalize this plan, different data sets were utilized to identify and map the different populations' distributions on the locality level.

The boundaries, names, and designations used on this map do not imply official endorsement of the United Nations or UNHCR. All data used were the best available at the time of map production.